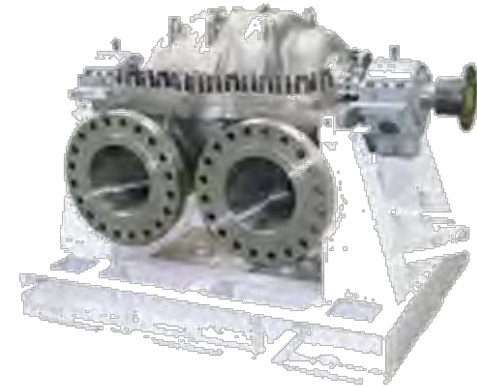


Tori Seal Mechanical Seal Case Histories

High Pressure RO Pump

Plant Type:	<i>RO Desalination Plant</i>
Pump Model:	<i>Horizontal Multi-Stage Pump</i>
Service:	<i>High Pressure RO</i>
Liquid:	<i>Sea Water</i>
Pumping Temperature:	<i>22-40°C</i>
Flow Rate:	<i>1,455 m³/hr</i>
Total Head:	<i>549 mtrs</i>



Seal Type:	<i>MT2706 Rotating Balanced Cartridge Seal</i>
Shaft Size:	<i>110mm</i>
Metallurgy:	<i>Super Duplex Stainless Steel</i>
Face Materials:	<i>Carbon/Silicon Carbide</i>
Elastomers:	<i>Viton</i>
Seal Pressure:	<i>12.8 – 17.4 barG</i>
Pump Speed:	<i>2,980 rpm</i>
Face Velocity:	<i>20 m/s</i>
API Plan:	<i>11 (Self flushing)</i>



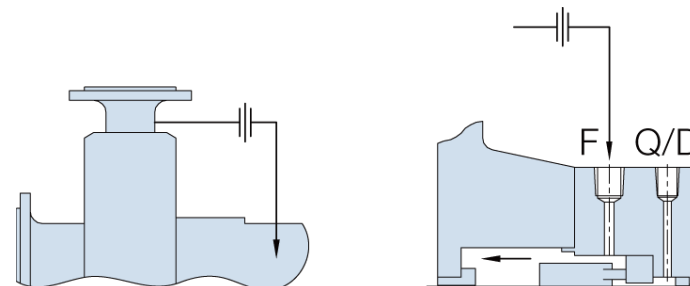
Tori Seal Mechanical Seal Case Histories

The seals which were originally installed were extremely costly due to high after sales spares prices charged by various seal manufacturers. In addition, the use of a non-standard seal cover adaptor created more potential leak paths.

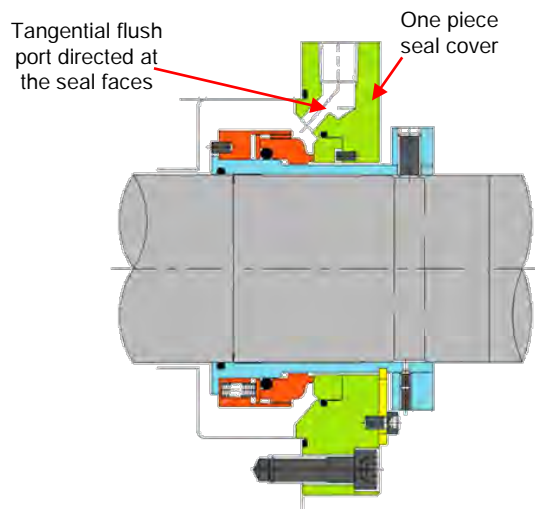
Tori Seal was able to offer a 'one piece' seal cover to retrofit into the existing stuffing box without any pump modifications required. The tangential flush directed at the seal faces also propagates better flushing fluid circulation, therefore more efficient face cooling and better face lubrication.

The materials offered were Super Duplex Stainless steel to match the existing seal's materials and handle the corrosive sea water.

Whilst being able to offer the same materials, the cost comparison was one of the major benefits for the customer. The Tori Seal MT2706's price was 44% of the existing seal which resulted in huge savings for the customer.



Plan 11 Self Flushing



Tori Seal MT2706



Tori Seal MT2706

